

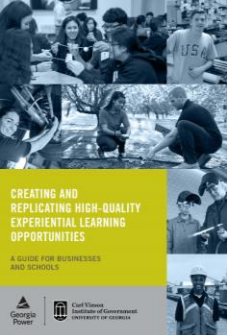


Carl Vinson
Institute of Government
UNIVERSITY OF GEORGIA

**Creating and Replicating High Quality
Experiential Learning Opportunities**





Carl Vinson
Institute of Government
UNIVERSITY OF GEORGIA

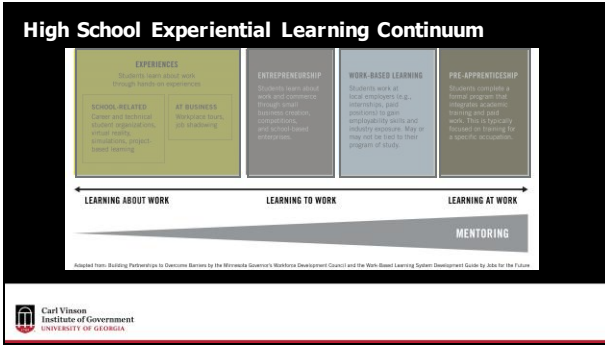


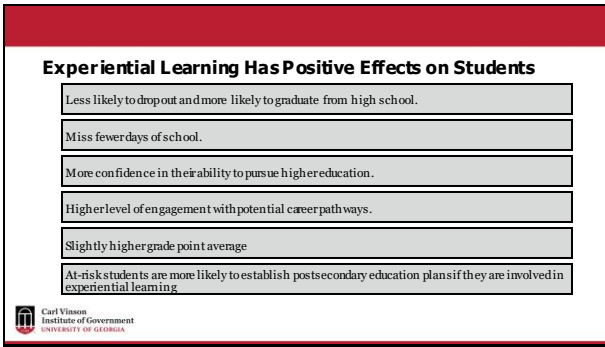
Agenda

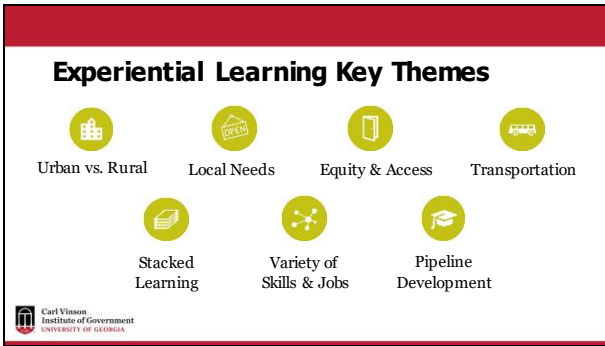
- What is Experiential Learning
- Why is it important
- Examples
- Resources

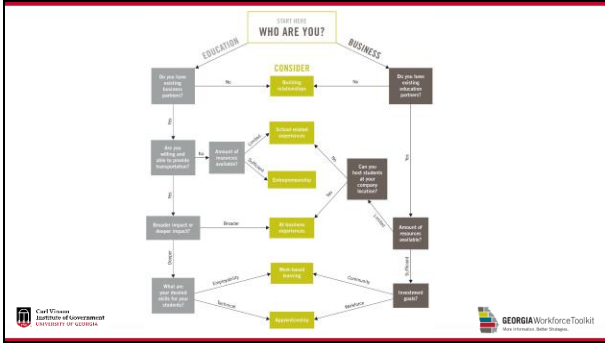
CREATING AND REPLICATING HIGH-QUALITY EXPERIENTIAL LEARNING OPPORTUNITIES
A GUIDE FOR BUSINESSES AND SCHOOLS











19 Case Studies

- Academies of Nashville
- Advanced Manufacturing and Business Academy
- Boston Private Industry Council School-to-Career Initiatives
- Brookwood High School Integrated Entrepreneurship
- Central Education Center Dental Assisting Clinical Experience
- Coffee County STEAM Internship
- Colorado Career Wise
- Entrepreneurial Business Incubator
- Frito-Lay Maintenance Pre-Apprenticeship Program
- Geo-Construction
- Georgia Consortium for Advanced Technical Training Apprenticeship
- Georgia FIRST Robotics
- Georgia United Credit Union at the Academy for Advanced Studies
- Great Promise Partnership
- Maritime Logistics Education Taskforce
- Recess County Job Shadow
- Reaching Potential through Manufacturing
- West Virginia Simulated Workplaces
- Wonderfil Company

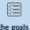



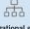



Logos for Carl Vinson Institute of Government and GEORGIAWorkforceToolkit are at the bottom.


Great Promise Partnership

Marvin Stafford
marvin@gppartnership.org

Logos for Carl Vinson Institute of Government and GEORGIAWorkforceToolkit are at the bottom.

Keys to Replication

 <p>Define the goals of your experiential learning program to determine what to invest in.</p>	 <p>Match your experiential learning opportunities with your organization's capacity.</p>	 <p>Use a proven experiential learning model.</p>	 <p>Identify an experiential learning champion.</p>
 <p>The organizational structure is key to long-term success.</p>	 <p>Business partners must be at the table.</p>	 <p>Stack the learning experiences.</p>	 <p>Create experiences, not just events.</p>

 Carl Vinson Institute of Government
UNIVERSITY OF GEORGIA

gaworkforce.org

 **GEORGIA Workforce Toolkit**
New! Innovation. Better Strategies.

 Carl Vinson Institute of Government
UNIVERSITY OF GEORGIA



Welcome

Questions

 Carl Vinson Institute of Government
UNIVERSITY OF GEORGIA

Contact Us



Greg Wilson
*Public Service Assistant at
Carl Vinson Institute of Government*
gjwilson@uga.edu



Rebecca McIver
*Research Professional at
Carl Vinson Institute of Government*
rmciver@uga.edu